



- Instructions for use
  - 3-Arm assembly template

for the construction of a platform substructure





Copyright © 2023 Kletterwald Plochingen GmbH

No part of this publication may be reproduced, stored in a database or transmitted in any form or by any means, electronic, mechanical, photocopying, recording or otherwise, without the prior written permission of Kletterwald Plochingen GmbH.

These installation instructions must be read before installation in order to guarantee safe handling of the Kletterwald Plochingen product.

The builder must make these installation instructions available to the installer and ensure that the installer has read and understood them.

Keep the installation instructions in a safe place for later use. Leave a clearly visible notice in the work area indicating the storage location.

The following technical standards and accident prevention regulations must be observed when installing and checking the Babo:

BGI 533 Safety when working with hand tools

DGUV rule 112-192 Use of eye and face protection

BG rule Use of protective gloves

3.21 Hand-held machines (Class No. 61)

EN 61029-1:2000-05 Safety of transportable power tools

BGHM Arbeitsschutz Kompakt No. 011 Working with hand drills

EN 15567-1:2020-05

The platform bolts are installed in accordance with the installation instructions for platform bolts 2.3

The handling of the drilling device with 3 arms is described below.

The installation of the drilling device requires:

An M16 or M20 threaded bolt with washer and nut as well as the appropriate tool for the nut.



Select the tree.

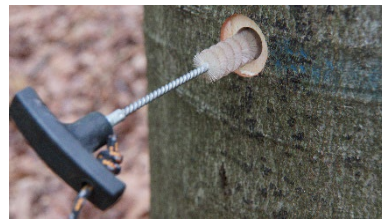
Determine the height and position of the platform.



Install the first platform bolt in accordance with the installation instructions for platform bolts.

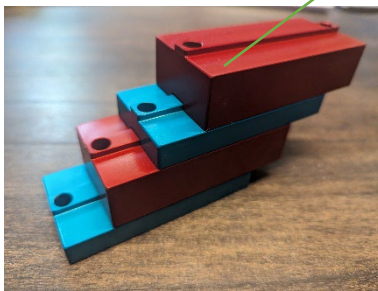
(« Rev A // 06-06-2024 »)

Drill a graduated borehole, clean the borehole, disinfect the borehole, apply resin, screw in the platform bolt.





Attach the drilling device. Use the **spirit level** to align and tighten with nut and washer.



Depending on the thickness of your wooden support structure, it may be necessary to adjust the axial dimension of the device, by adding coloured **wedges** to drill while respecting the centre-to-centre distance between your supports (planks/logs, etc.).

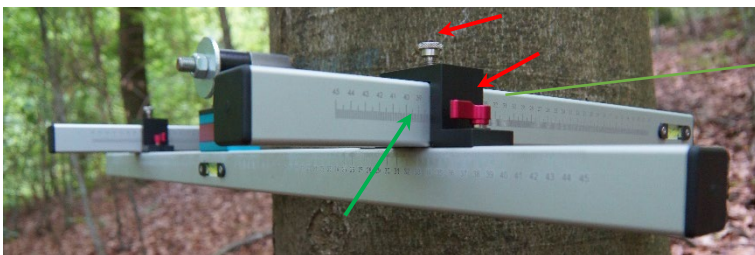
1. Centre distance 10 cm = No spacer
2. Centre distance 11 cm = 1 **blue 10 mm** wedge
3. Centre distance 12 cm = 1 **red 20 mm** wedge
4. Centre distance 13 cm = 1 **red** wedge + 1 **blue** wedge
5. Centre distance 14 cm = 2 **red** wedges

If you have an extra 5mm between centres, add 1 x 5mm black wedge.

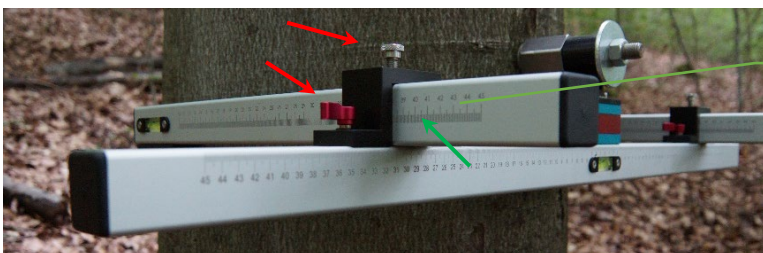
For example centre distance 12.5 cm = 1 red wedge + 1 black wedge.



Loosen the **clamping screws** and shift the first arm to the desired position.



Close the **clamping screws**. Check the **scale**.

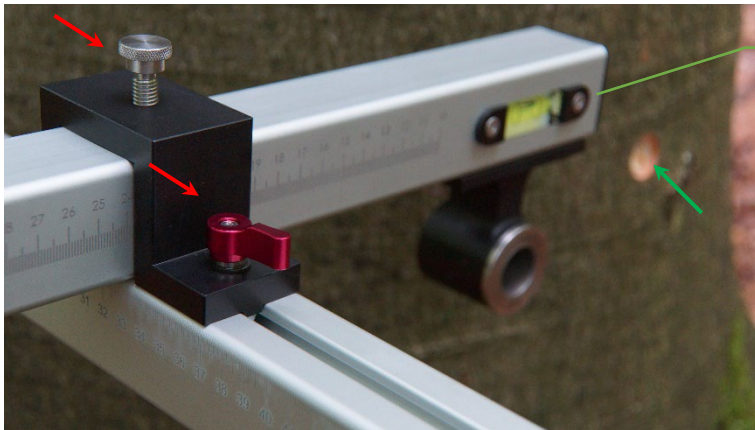


Untighten the **clamping screws** and shift the second arm to the desired position by using the **scale**.

Close the **clamping screws**.



Drill the position of BABO BOLT three and four.  
**ATTENTION** the countersink must not touch the **guide sleeve!**



Untighten the **clamping screws** and remove the arms from the **working area**.



Install the second platform bolt in accordance with the installation instructions for platform bolts.

(« Rev A // 06-06-2024 »)



Loosen the **screw connection**.

Remove the drilling device, rotate it by 180° and attach it to **BABO BOLT 2 or 3**.

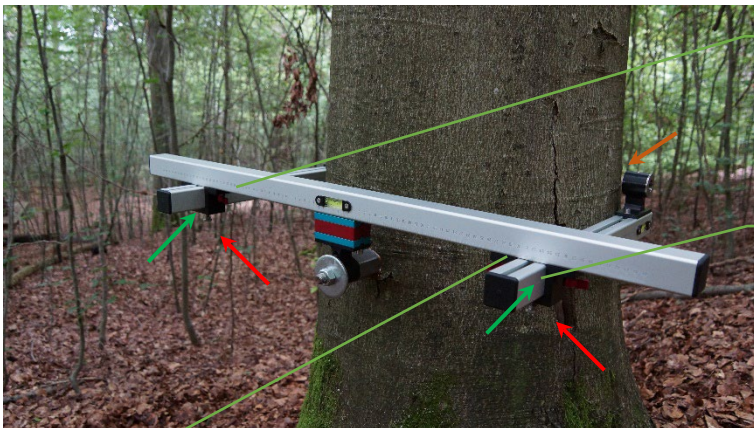


The drilling device is now upside down.

Pay attention to the spirit level when fastening.



Untighten the **clamping screws** and align the **drill sleeve** with the **BABO BOLT**



Close the **clamping screws**. Check the **scale**.

Untighten the **clamping screws** and shift the second arm to the desired position by using the **scale**.

Close the **clamping screws**.

The position of the **last platform bolt** is now fixed.

Install the last platform bolt in accordance with the installation instructions for platform bolts.

(« Rev A // 06-06-2024 »)



NOTES:

---

---

---

---

---

---

---

---

---

---

Many thanks for your confidence in our products.

We hope that you were satisfied with the information and instructions you received and that you were able to carry out the installation successfully.

Should you require any further assistance, please do not hesitate to contact us at any time

phone                    +49 (0)152-34168948

mail                      [office@babo-solutions.de](mailto:office@babo-solutions.de)

Good luck for your installation of our babo!

« Rev B // 20-02-2025 »